



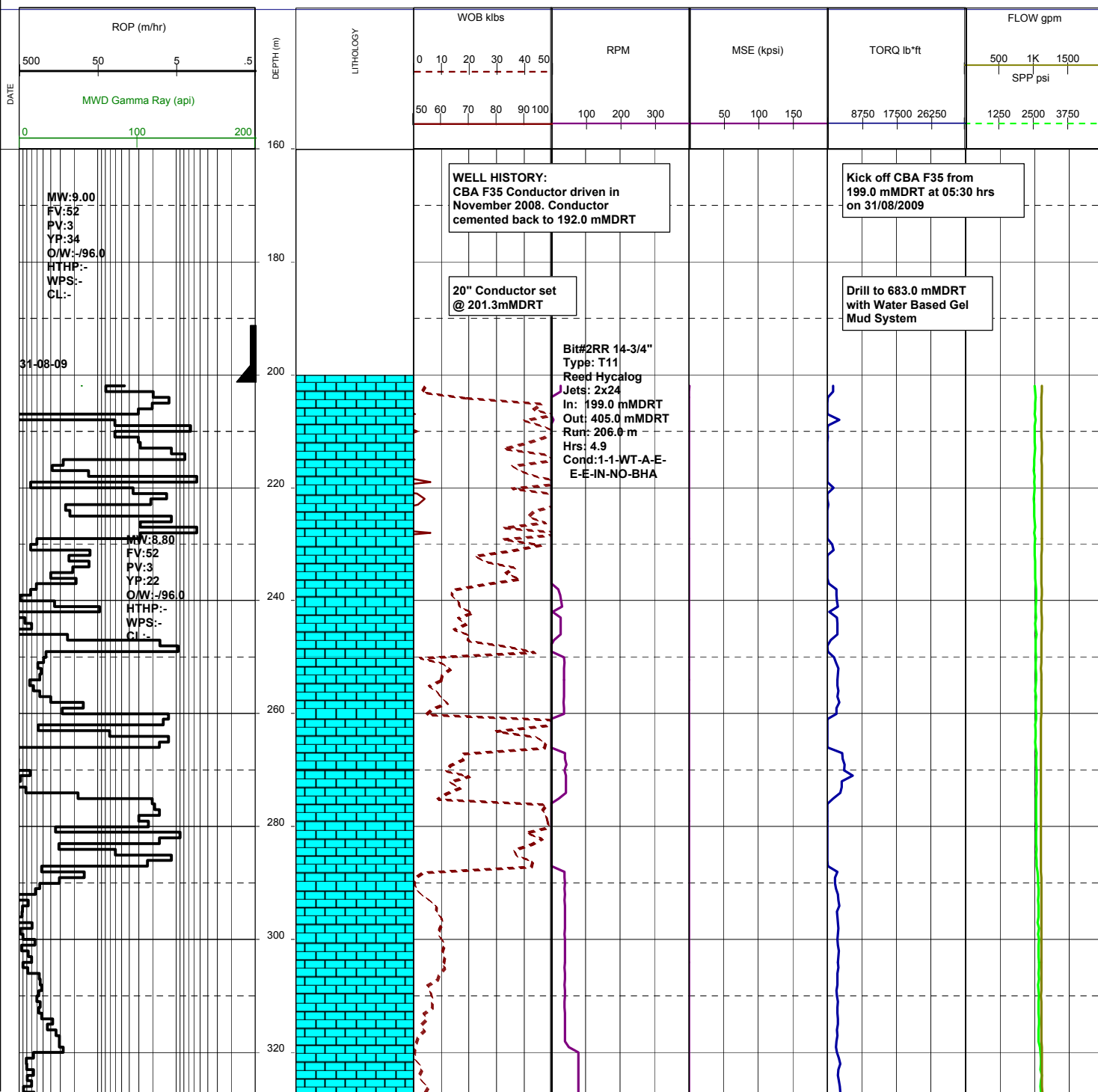
DRILLING LOG

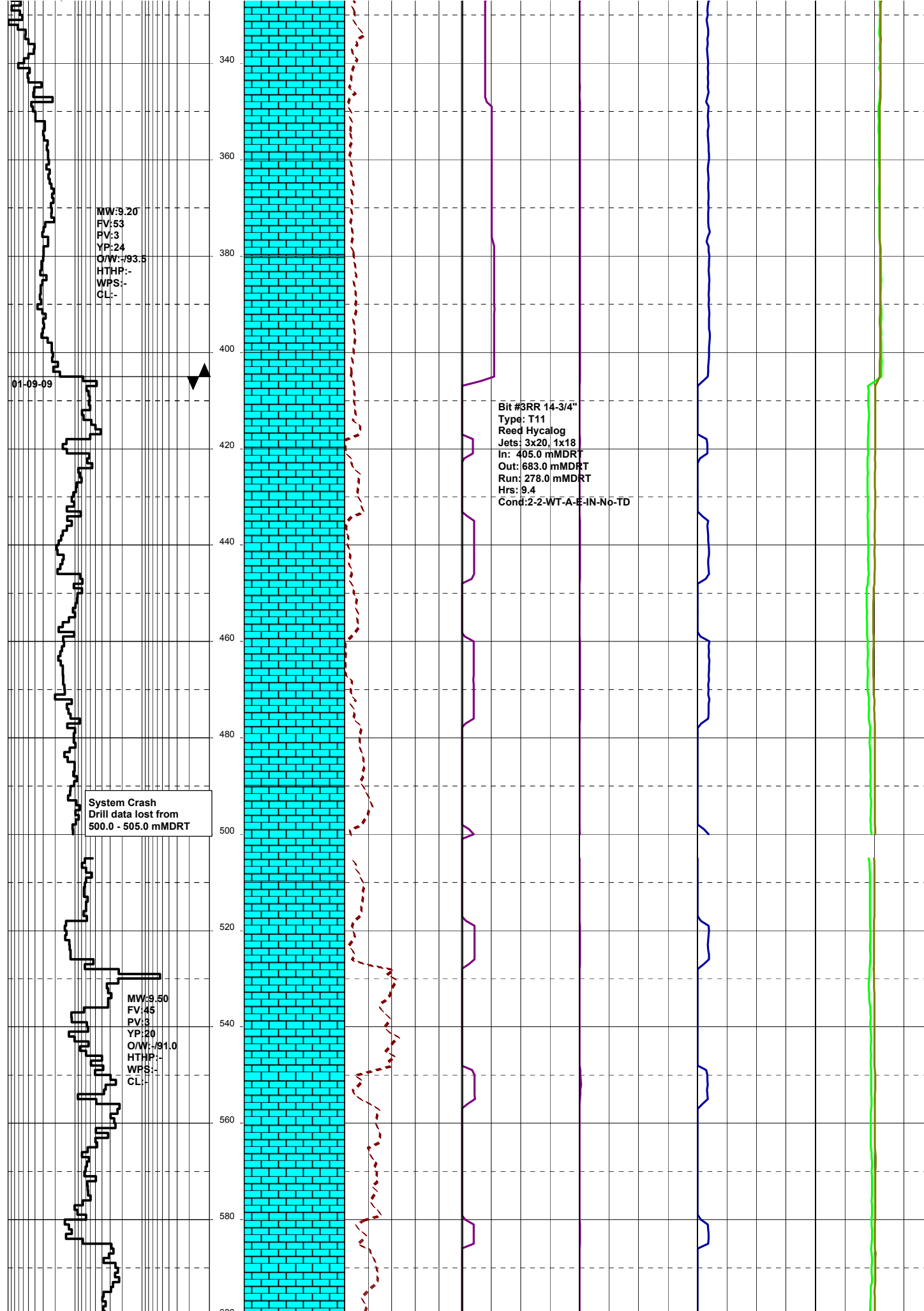


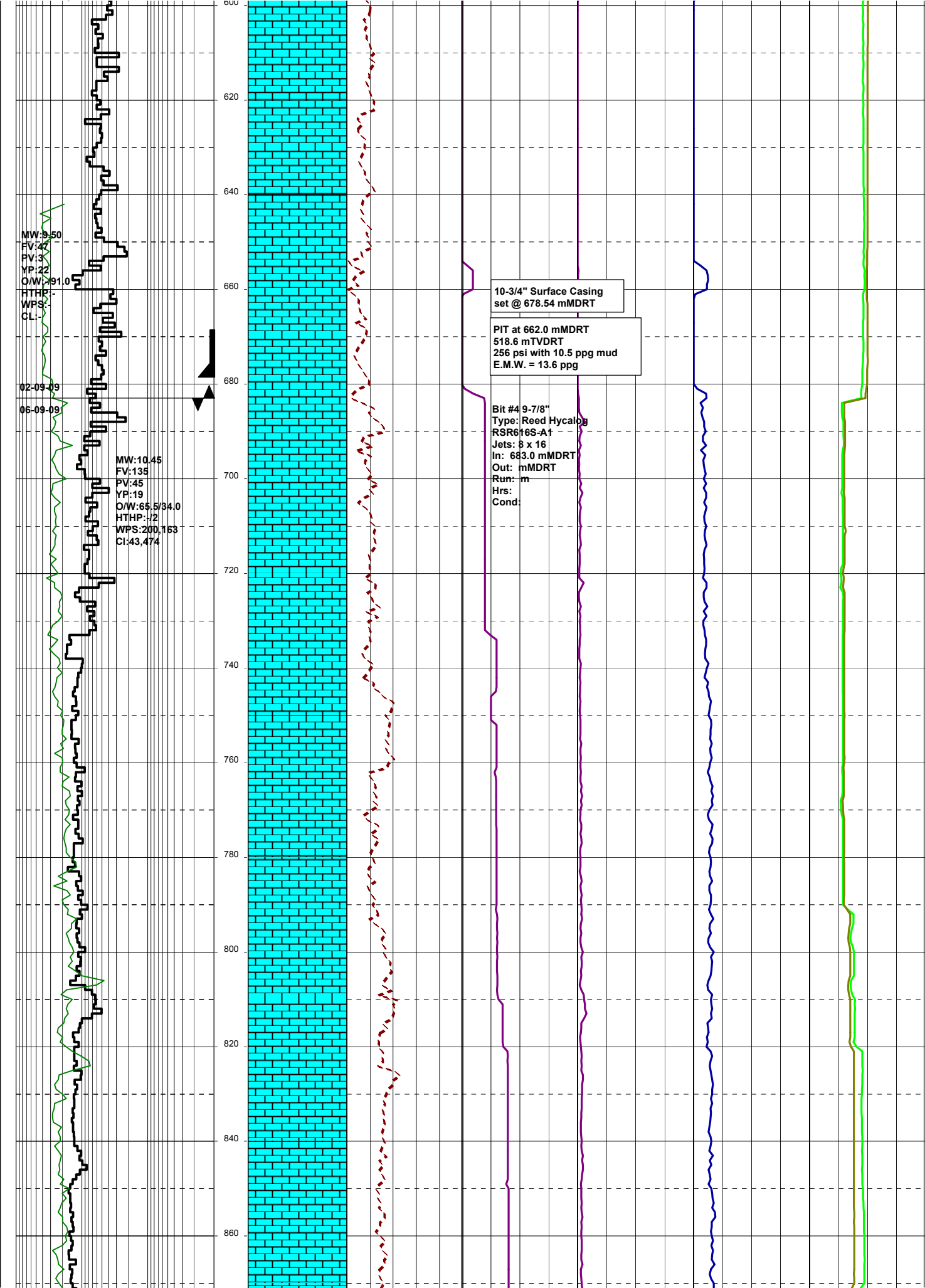
FROM : (mt) 160 TO : (mt) 4600 SCALE : 1/ 1000

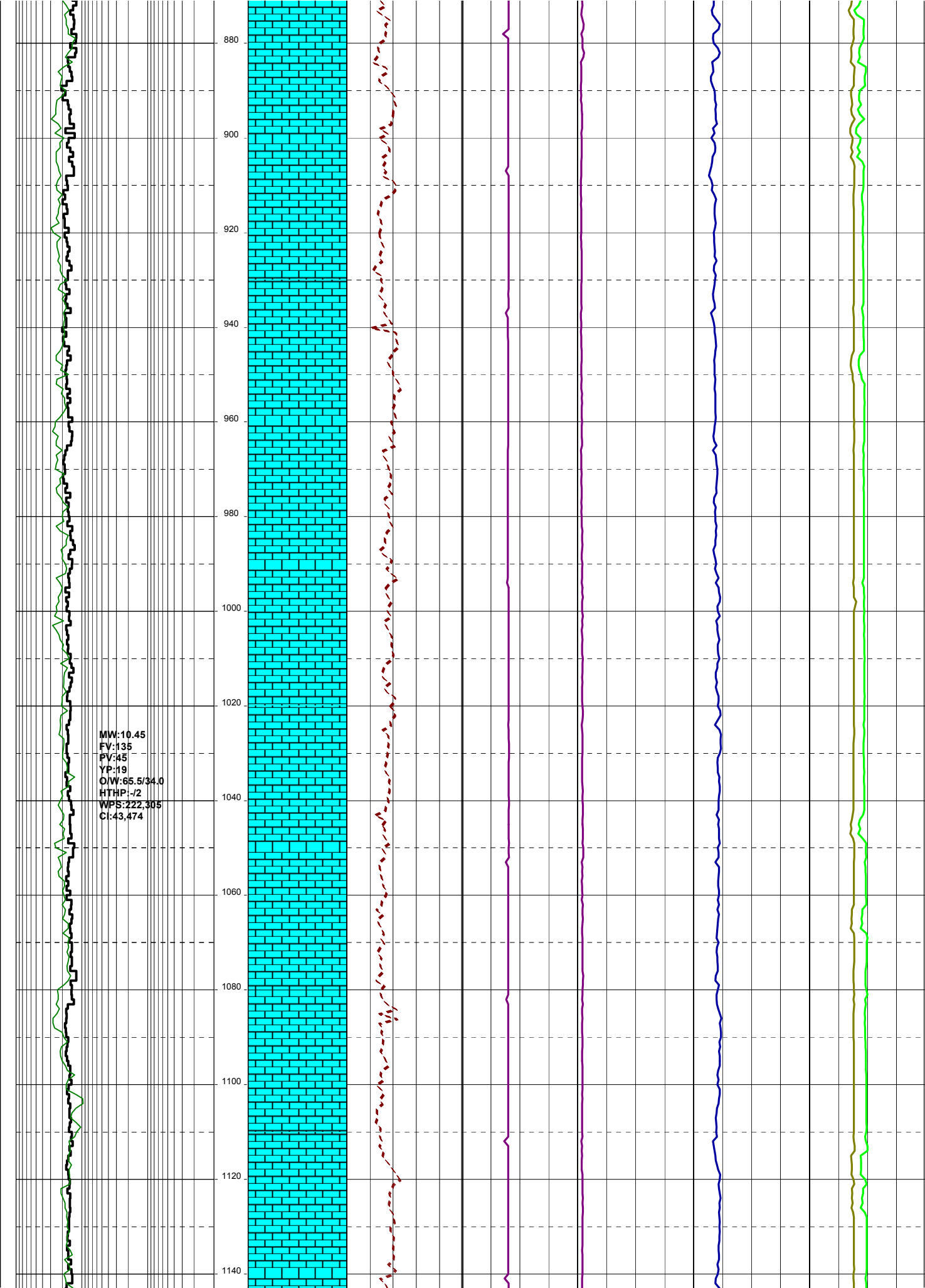
Well Name : CBA F35 Country : AUSTRALIA
 Company : ESSO AUSTRALIA LTD
 RT-MSL (m) : 41.0 Final TD:
 RT-SEABED (m) : 120.0 Final TVD:

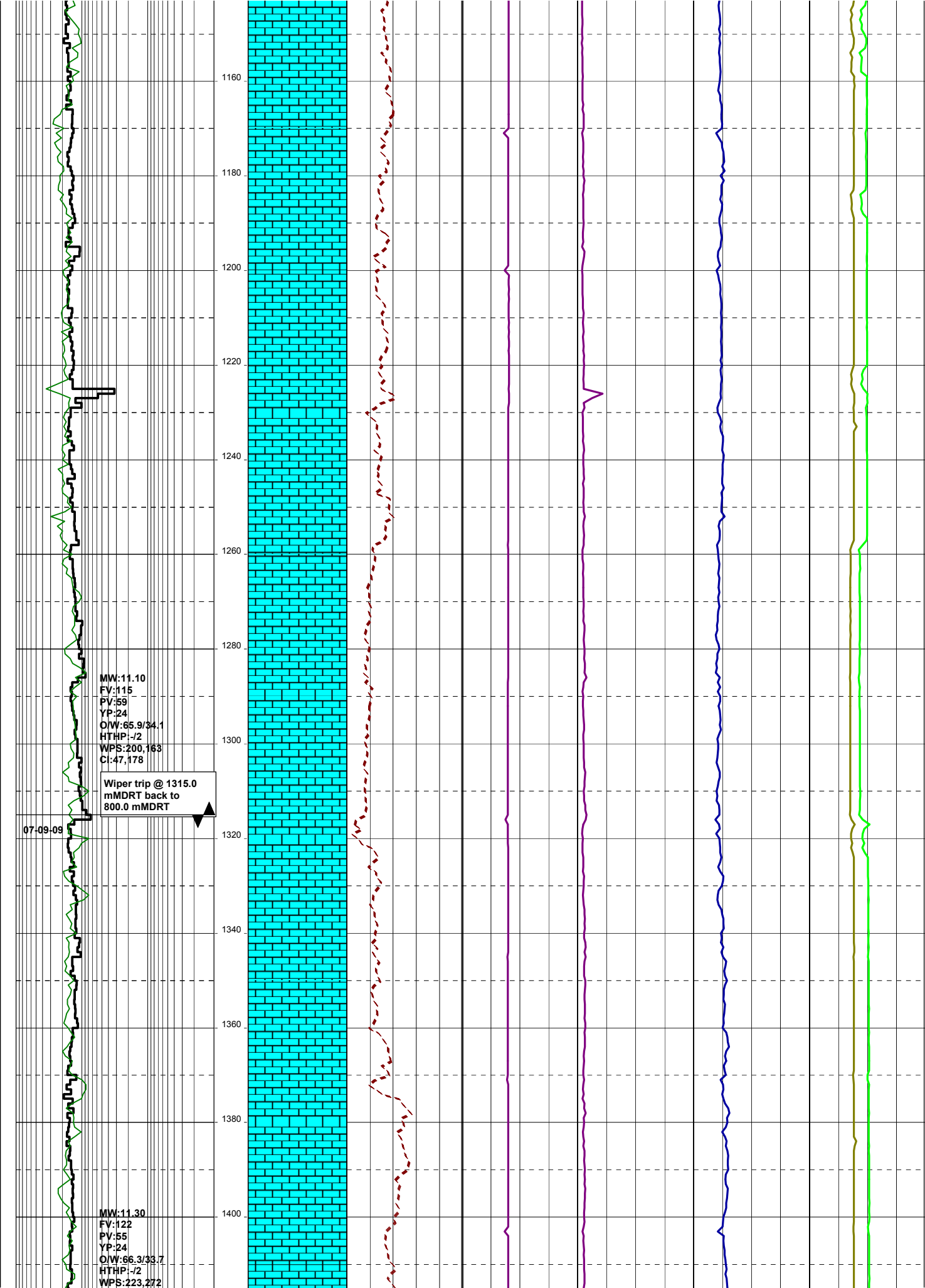
Generated by geoNEXT Package











MW:11.10
FV:115
PV:59
YP:24
O/W:65.9/34.1
HTHP:-/2
WPS:200,163
CI:47,178

Wiper trip @ 1315.0
mMDRT back to
800.0 mMDRT

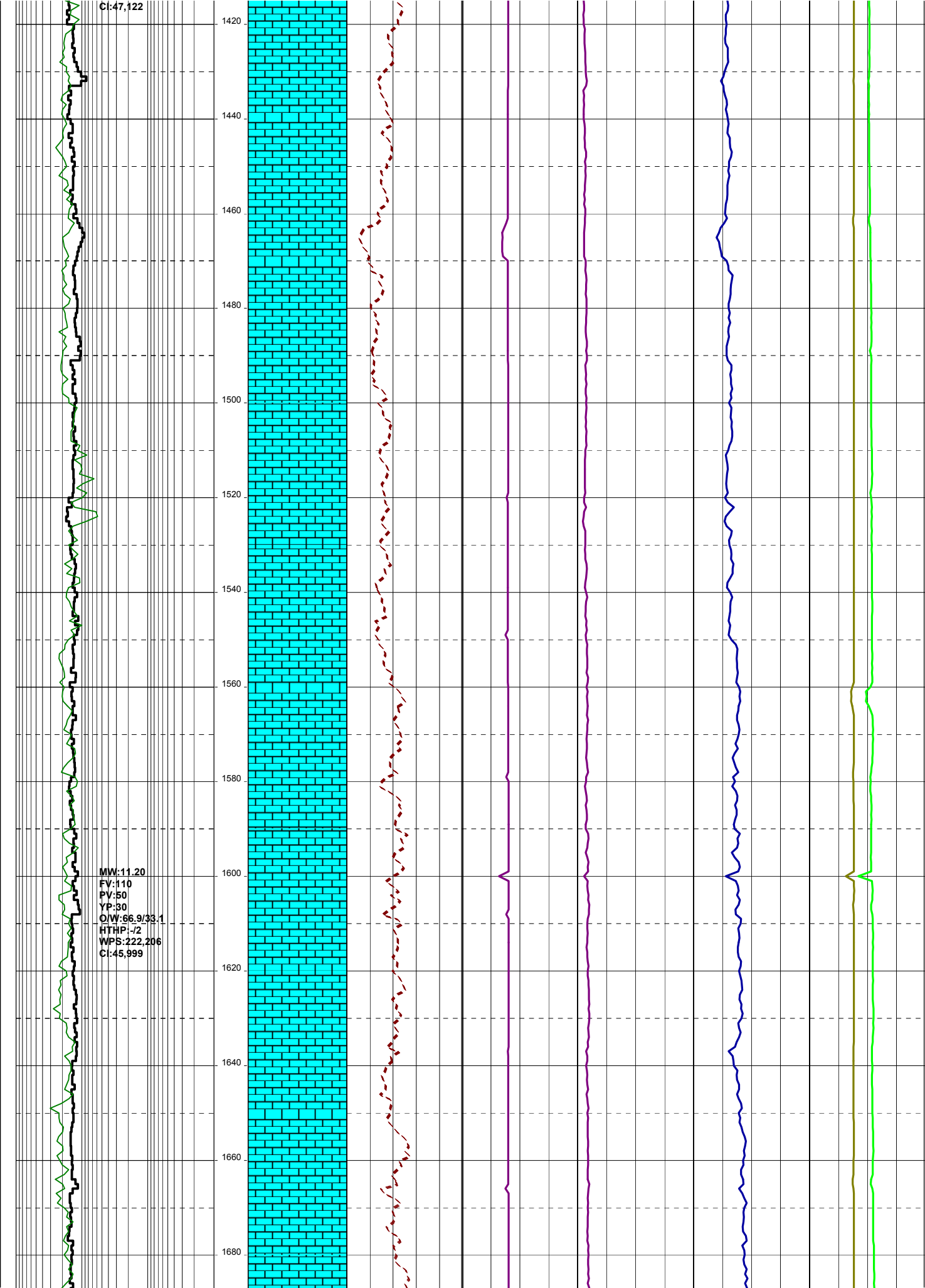
07-09-09

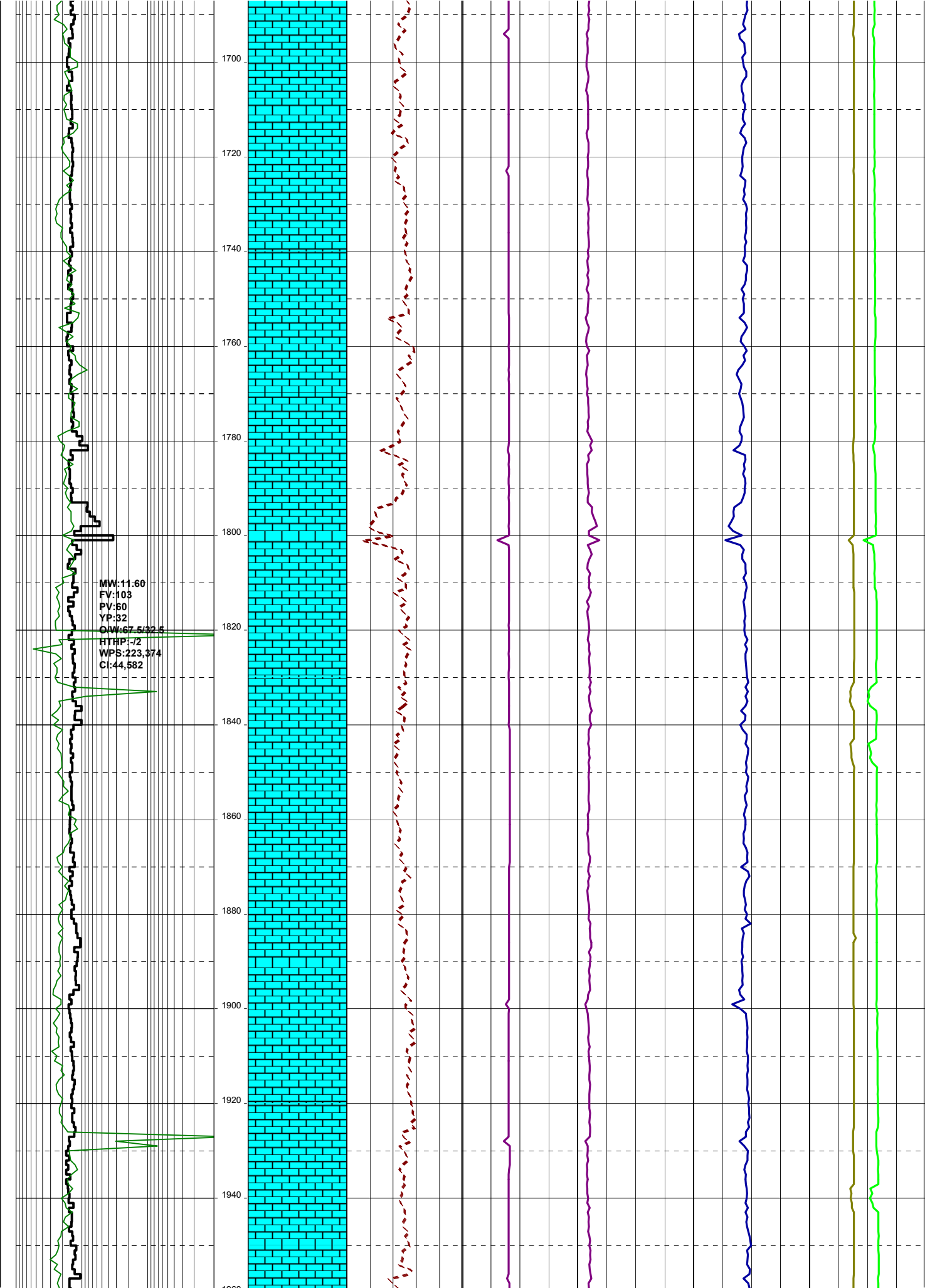
MW:11.30
FV:122
PV:55
YP:24
O/W:66.3/33.7
HTHP:-/2
WPS:223,272

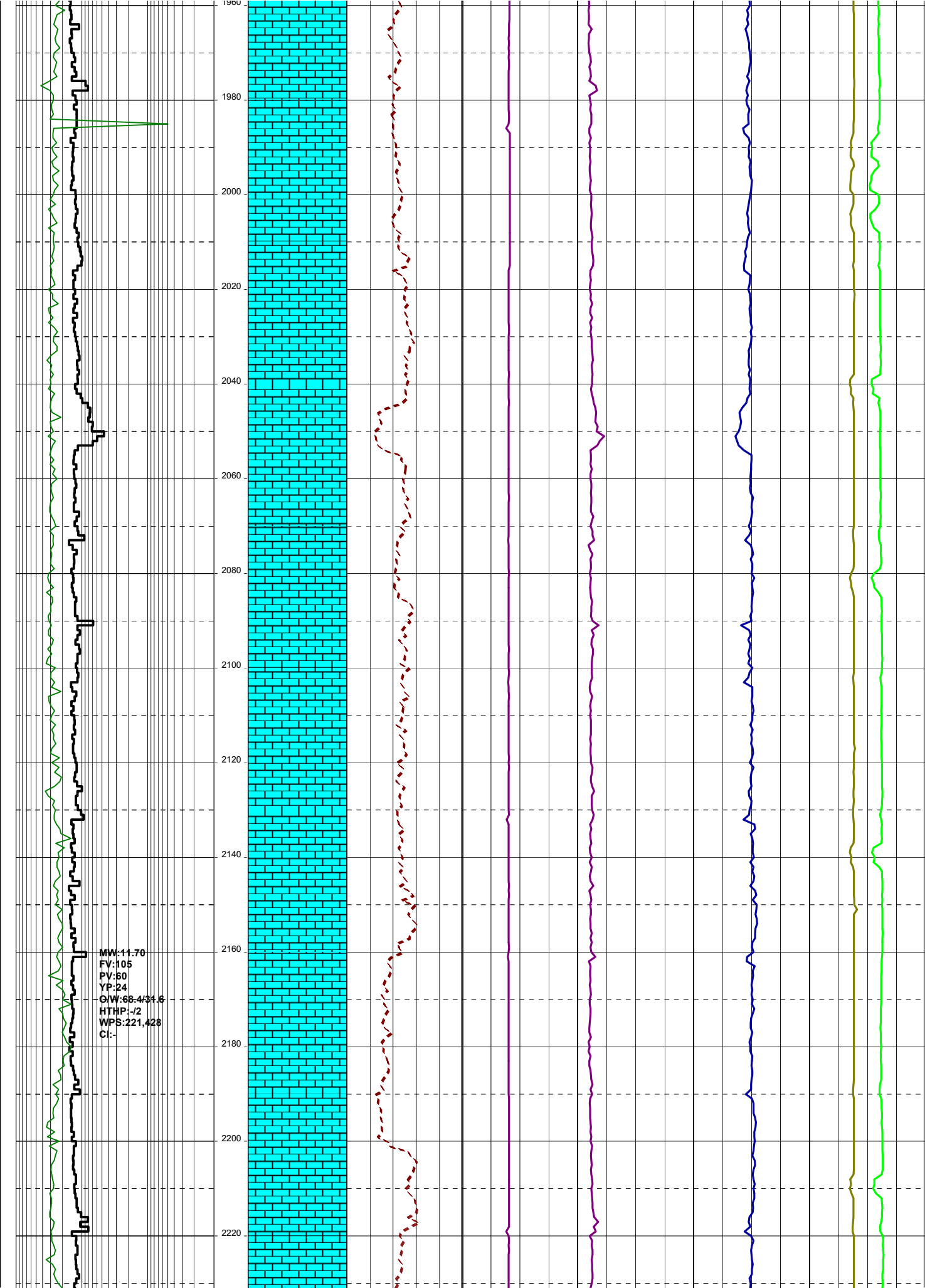
C1:47,122

1420
1440
1460
1480
1500
1520
1540
1560
1580
1600
1620
1640
1660
1680

MW:11.20
FV:110
PV:50
YP:30
O/W:66.9/33.1
HTHP:-/2
WPS:222,206
C1:45,999



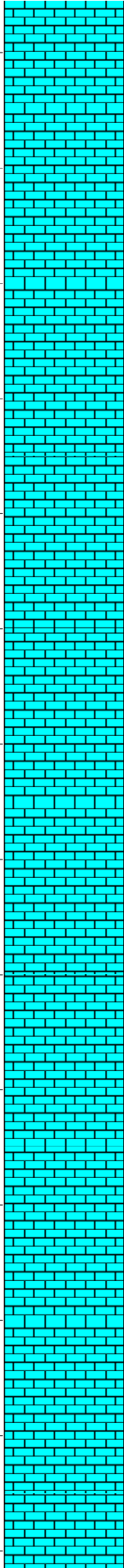




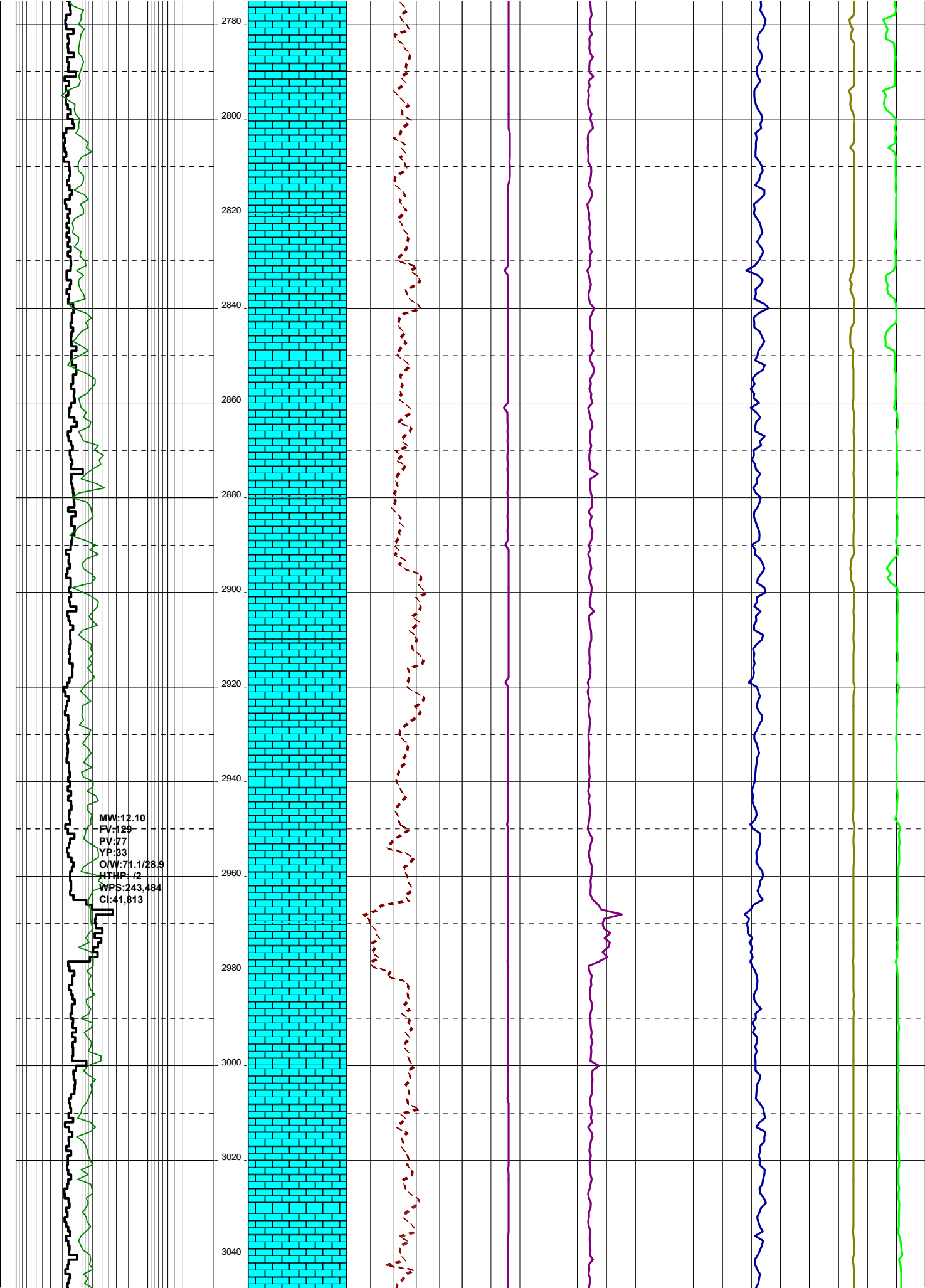
07-09-09

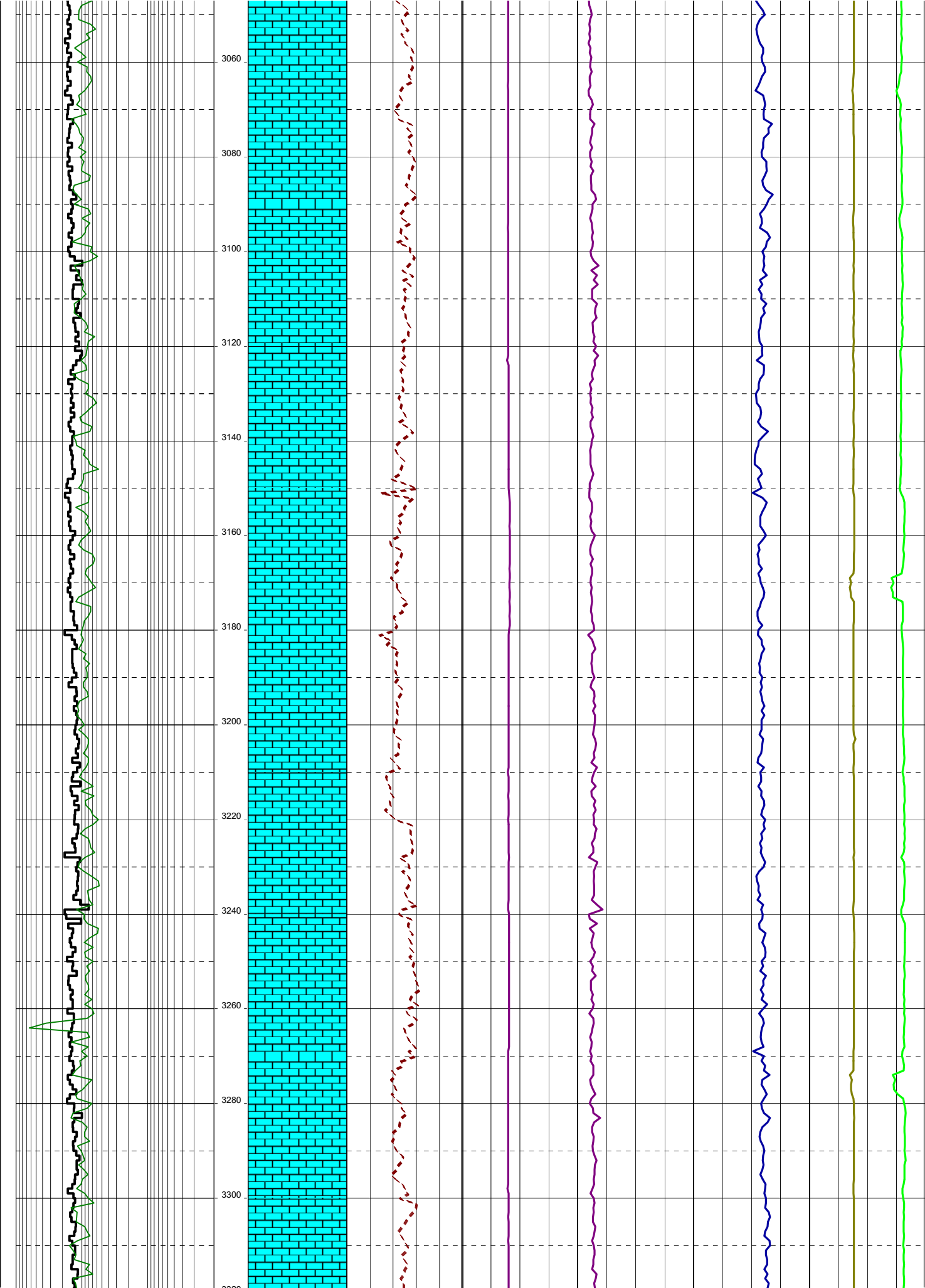
MW:12.10
FV:119
PV:69
YP:30
O/W:68.4/31.6
HTHP:-2
WPS:224.570
CI:42,274

2240
2260
2280
2300
2320
2340
2360
2380
2400
2420
2440
2460
2480
2500







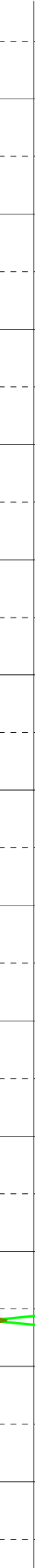
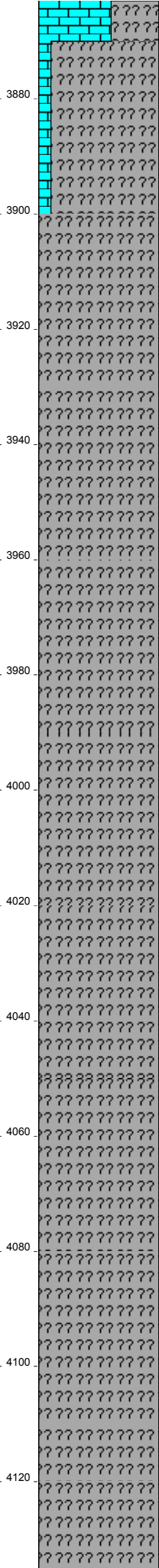






10-09-09

MW:12.40
FV:125
PV:74
YP:33
QW:72.7/27.3
HTHR:-/2
WPS:266,708
CI:43,534



Control drill below 50 m/hr
from 4056.0 mMDRT.

Circulate at 4091.0 mMDRT
for repairs to mud pump.

Change database to
0.5m at 4100.0 mMDRT
for Reservoir evaluation

Monitor well on Trip
Tank while changing out
cracked single pipe

4420
4440
4460
4480
4500
4520
4540
4560
4580
4600

7" Production Casing
set at 45xx.0 mMDRT

Cobia F35 reached TD of
4573.00mMDRT (2463.83mTVDRT)
(-2422.83mTVSS) at 23:15 hrs
on 10/09/2009

